

DRILL-JET STANDS

COMPACT, FUNCTIONAL AND ROBUST DIAMOND CORE DRILLING STANDS
FOR PROFESSIONAL USE

- The UNIVERSAL-mounting plate makes it easy to mount any drill motor
- Ergonomic and effortless core drilling by hand crank which can be operated from either side
- The feed rate is precisely controllable with 1:1 direct ratio
- The precise and robust sliding guide or roller guide can be adjusted quickly and easily
- The drilling column can be swivelled back up to 45° for inclined drilling
- The handle and the transport rollers on the stand offer versatile handling and enable the drill stand to be transported easily
- Alignment of the core drilling stand by 5 levelling screws as well as a vertical and horizontal water level integrated in the "support"
- The support can be locked in any position with a locking screw, for stepless height adjustment
- The drill stand supports give the drill stand very high stability

CDR 200

- Precise guidance via prismatic sliding block and the aluminium profile column

CDR 250

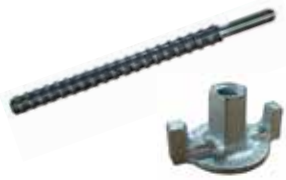
- Precise guidance via prism rollers and aluminium profile column
- The drill stand offers various mounting options thanks to its combined dowel/vacuum base

CDR 351

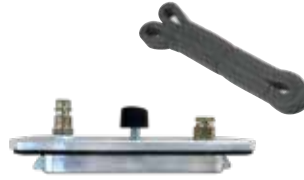
- Precise guidance via prism rollers and aluminium profile column
- A steel dowel base is used for set-up of the drill stand
- Standard scope of delivery including wheel set



[1] Collar



[2] Quick-clamping spindle M12



[3] Valve plate and vacuum sealing ring



[4] Vacuum sealing ring



[5] Wheel set CDR 250



[6] UNIVERSAL spacer plate



[7] Vacuum pump



[8] Vacuum plate

TECHNICAL DATA	CDR 200	CDR 250	CDR 351
core bits Ø recommended	150 mm	200 mm	300 mm
core bits Ø max.	162 mm (200 mm)	250 mm	350 mm
lifting height	565 mm	605 mm	700 mm
motor mounting using	collar-Ø 60 mm (UNIVERSAL)	UNIVERSAL	UNIVERSAL
feed gears operation from either side	1:1	1:1	1:1
feed	hand crank	hand crank	hand crank
support	bearing guide	roller guide	roller guide
angle drilling	stepless 0 - 45°	stepless 0 - 45°	stepless 0 - 45°
fixing	dowel foot	combined dowel / vacuum foot	steel dowel foot
dimensions (L/W/H)	330/210/840 mm	430/230/955 mm	330/250/1070 mm
weight	9.5 kg	11.5 kg	19.3 kg

CORE DRILL STAND	NR.
CDR 200 with universal motor plate + with clamping collar Ø 60 mm quick-clamping system	1076294
CDR 250 with universal motor plate	1076295
CDR 351 with universal motor plate + wheel set	1076296

ACCESSORIES	NR.
[1] CDR 200 / 250 / 351 - collar Ø 60 mm	1076297
[2] quick-clamping spindle M12	700323
CDR 200 / 250 quick-clamping motor plate	1076305
CDR 351 quick-clamping motor plate	1076306
[3] CDR 250 - vacuum-set - vacuum cover and vacuum sealing ring (foam rubber)	1076300
[4] CDR 250 - vacuum sealing ring (foam rubber)	1076302
[5] CDR 250 - wheel set	1076303
[6] UNIVERSAL spacer plate 30 mm	700327
[6] UNIVERSAL spacer plate 60 mm	700328
[6] UNIVERSAL spacer plate 90 mm	700329
[7] Vacuum pump incl. 2 m hose and pneumatic quick coupling	1076304
[8] Vacuum plate	700360
Vacuum plate - vacuum sealing ring (foam rubber)	1076301

